

Screening for learning disability in Leicester

Julia Kew

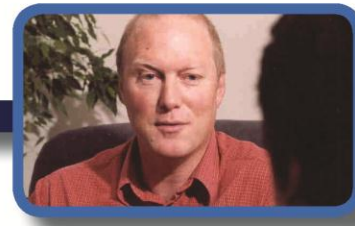
Primary Care Liaison Nurse



Identifying people with learning disabilities and their need for reasonable adjustments



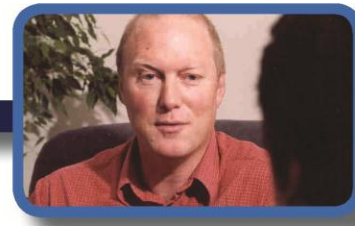
- **Leicestershire Partnership NHS Trust provides learning disability health specialist services for Leicester, Leicestershire and Rutland**
- **Leicester City has a varied population**
- **The census in 2011 said that 45% of people were White British**
- **There are 20 main languages spoken**



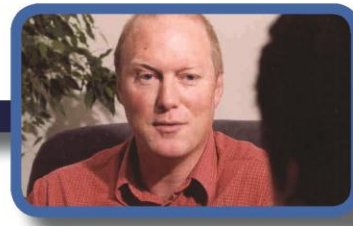
- **Leicestershire Partnership Trust has a register of information about people with learning disabilities known to the health specialist service**
- **GP's had some information**
- **Local council had some information**
- **Poor information sharing across services**

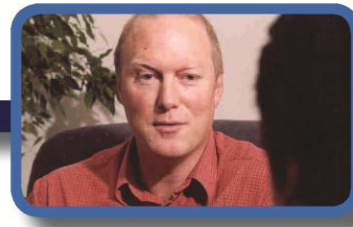
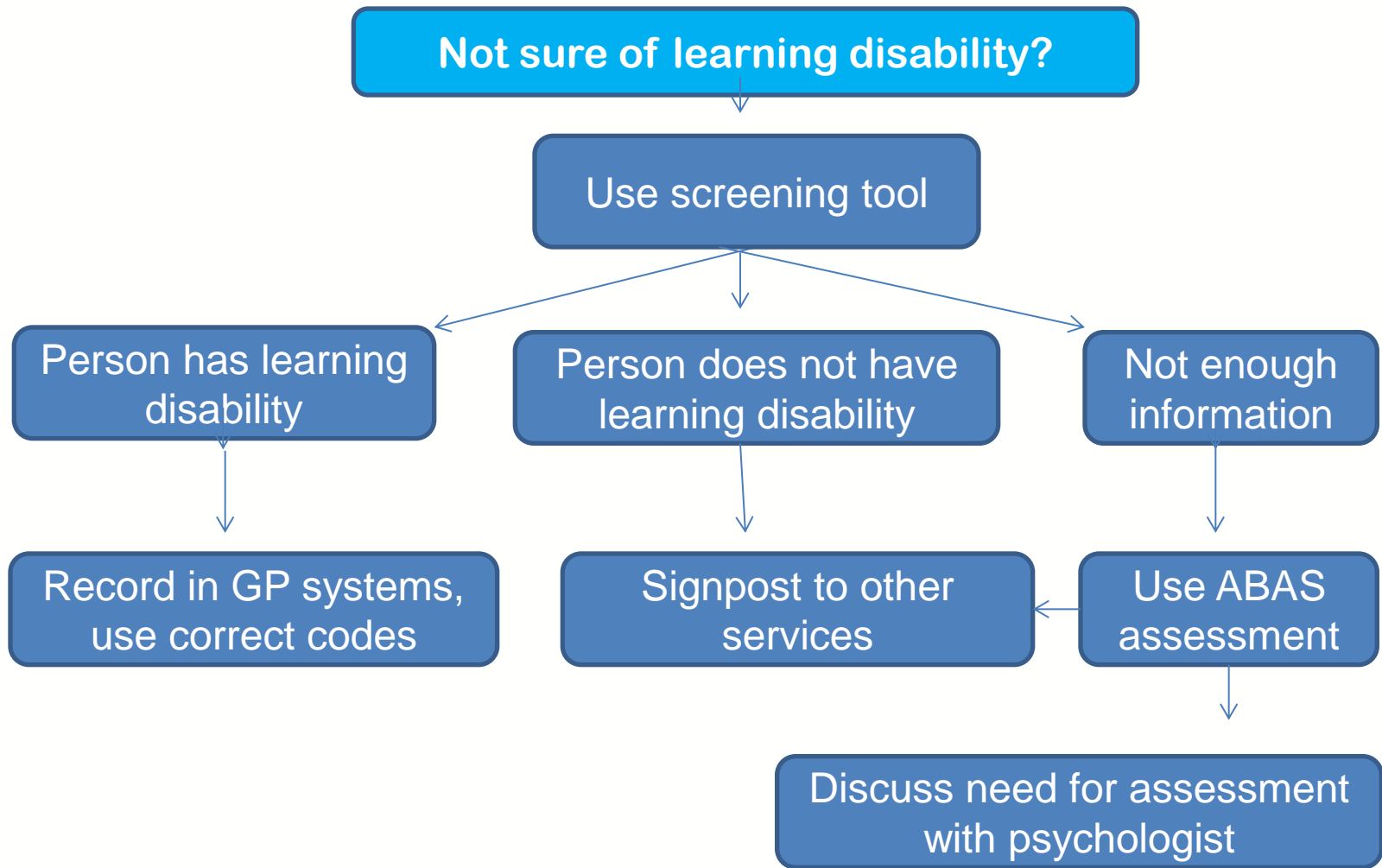


- A screening tool was developed to assist health and social care staff identifying if a person they are supporting is likely to have a learning disability
- This has been used in GP practices to agree if a patient is eligible for a learning disability annual health check
- In Leicester in 2009 almost 1 in 3 patients with a learning disability were not identified by their GP practice.



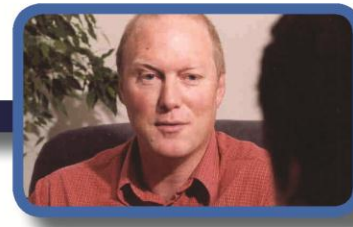
- The GP practices have been supported to identify people who have a learning disability
- The screening tool is based on previous records of development and skills of daily living
- Information is not always available
- Further screening may be needed





The screening tool asks about

- Previous diagnosis and definition
- Syndromes related to learning disability
- Formal assessments
- Previous services used
- Childhood development
- Education
- Activities
- Support needed



Any questions?

Julia Kew

Primary Care Liaison Nurse

Learning Disability Division

Leicester Frith Hospital

Grobby Road

Leicester LE3 9QF

julia.kew@leicspart.nhs.uk

